

Phaser®
6280
A4
Colour
Laser Printer



Xerox Phaser® 6280
Colour Laser Printer
Impressive colour.
Impressive price.



Phaser® 6280 Colour Laser Printer

Affordable colour laser printer that delivers for busy work teams. Spectacular colour printing to give your documents the competitive edge, plus solid performance with built-in networking, advanced colour technology and unparalleled quality, all at a surprisingly low price.

Performance that keeps up with your busy office

The Phaser 6280 printer can handle all the work your team can give it, with fast colour output and advanced capabilities.

- **Built for speed.** Fast 25 ppm for colour printing and 30 ppm for black and white.
- **Fast first page out.** In as little as 10 seconds.
- **Handle complex documents with ease.** Thanks to 256 MB of printer memory and a powerful 400 MHz processor.
- **Work team-ready.** Enabled with built-in networking and on-board support for Windows, Mac and Linux.
- **Flexible expansion.** Suited to fit your workload, including an optional hard drive, memory expansion and paper capacity up to 950 sheets.
- **Automatic two-sided printing.** Available with the Phaser 6280DN configuration.
- **Enterprise-ready.** Support includes device management tools such as CentreWare print management software.

Low-cost colour printing for your business

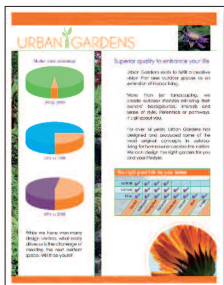
Add outstanding colour to your business documents at an exceptionally low price, with an array of advanced colour printing tools and money-saving features.

- **Exceptional quality.** Outstanding 600 x 600 x 4 dpi image quality and true Adobe® Postscript® 3™ for bright, accurate colours.
- **Bring out the clarity and detail.** The Phaser 6280 uses smaller, more uniform toner particles than conventional toner in every print with Xerox EA-HG toner.
- **Choose “Run Black”.** Enables you to print colour documents in black when colour cartridges are empty.
- **Better manage your printing costs.** The Phaser 6280 tracks the number of colour and black pages you’re printing via usage monitoring technology.
- **Paper-saving feature.** The Phaser 6280 automatically skips blank pages in a document.

Quality engineering with world-class Xerox service and support

Xerox precision design and engineering deliver worry-free reliable performance.

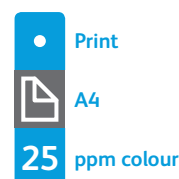
- **Well-built, durable construction.** A robust 70,000-pages/month duty cycle can meet the needs of even the busiest work team.
- **You’re covered with a one-year on-site warranty.** Providing the best service and support in the industry.
- **Engineered to be quiet.** Low-noise levels make it a great fit for office environments.
- **Printing Scout™.** Tracks your print jobs and provides immediate print-issue alerts with correction suggestions.
- **Environmentally conscious.** The Phaser 6280 is part of the Xerox Green World Alliance recycling programme. Ship your used cartridges to Xerox for free and we’ll take care of recycling.
- **Energy Star Qualified.** Saves on office utility bills.



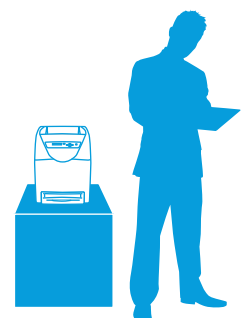
Make your point in colour, and customers get it faster and retain it longer.

Phaser® 6280 Quick Facts

- Print up to 25 ppm colour, 30 ppm black and white
- 600 x 600 x 4 dpi
- 400 MHz processor
- 256 MB memory expandable to 1,280 MB
- 70,000 pages/month duty cycle
- 400-sheet capacity, expandable to 950 sheets



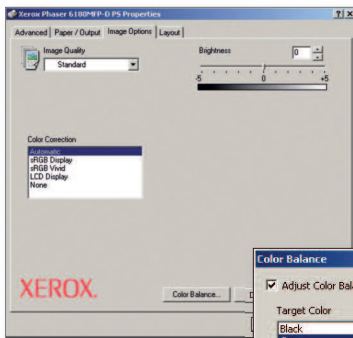
WxDxH:
400 x 490 x 473 mm



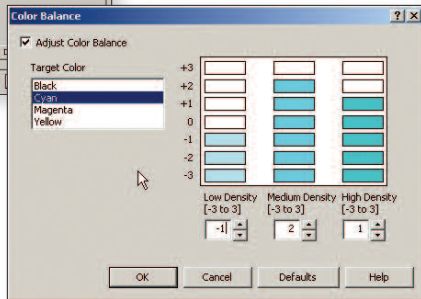
- 1 Fast, automatic two-sided printing is standard on the 6280DN configuration.
- 2 Intuitive front panel includes a toner gauge for a quick visual check of current toner levels.

- 3 150-sheet multipurpose tray supports custom sizes from A6 to A4.
- 4 250-sheet main tray feeds paper up to 220 gsm.

- 5 Add an optional 550-sheet feeder to boost total paper capacity to 950 – available as an extra tray or incorporated into a pedestal stand.
- 6 Optional Productivity Kit (includes 40 GB hard drive) provides more print features. Use Secure Print to authenticate users printing confidential documents.



Pantone® Colour approved solid-colour simulations and Xerox colour correction technology.



Print to please.
The Phaser 6280 boasts advanced colour technology to bring your business documents to life



Phaser® 6280 Printer Configurations

Phaser 6280N

- 10/100 Base-T Ethernet and USB connectivity
- 256 MB memory (expandable to 1,280 MB)
- 150-sheet multipurpose tray and 250-sheet input tray for 400-sheet capacity

Phaser 6280DN

- 6280N configuration plus:**
- Automatic two-sided printing

Add Productivity

- Wireless network adapter
- Additional memory
- Productivity kit with 40 GB hard drive

Add Paper Handling

- Automatic two-sided printing (standard on 6280DN)
- 550-sheet feeder
- 550-sheet feeder with pedestal stand

Phaser® 6280

Colour Laser Printer



| | 6280N | 6280DN |
|--------------------------------------|---|--|
| Speed | Up to 25 ppm colour / 30 ppm black and white (A4) | |
| Duty Cycle | Up to 70,000 pages / month | |
| Paper Handling Paper input | Standard | Multipurpose Tray: 150 sheets; Custom sizes: 76.2 x 127 mm to 216 x 356 mm |
| | | Tray 1: 250 sheets; Custom sizes: 148 x 210 mm to 216 x 356 mm (A6-A4) |
| | Optional | Tray 2: 550 sheets; Custom sizes: 148 x 210 mm to 216 x 356 mm (A6-A4) |
| Paper output | 300 sheets | |
| Automatic two-sided printing | Optional | Standard |
| Print First-page-out-time | As fast as 10 seconds | |
| Resolution (max) | Up to 600 x 600 x 4 dpi | |
| Processor | 400 MHz | |
| Memory (std / max) | 256 MB / 1,280 MB | |
| Connectivity | USB 2.0, 10/100 Base-TX Ethernet, Optional wireless network adaptor | |
| Page description languages | PCL® 6, PCL® 5e, Adobe® PostScript® 3™ | |
| Print features | Standard | N-up, Fit to page, Booklet printing, Skip blank pages, Transparency separators, Run black, Covers/Separators*, Poster printing*, Watermarks*, Overlays*, Banner sheets*, Draft mode* |
| | Optional | Productivity Kit (includes 40 GB hard drive) enables secure / proof / personal / saved print, Hard disk collation, Extended font / form storage |
| Security | IPv6, IP Sec, SNMPv3, IP Filtering, HTTPS/SSL, 802.1x, Secure Print** (with additional hard drive option), password protected administrative settings | |
| Warranty | One-year on-site warranty† Plus optional service extensions available | |

* Accessed via PCL Driver

** Requires optional memory or hard drive

† Products purchased under a 'PagePack' agreement do not carry a warranty. Please refer to your service agreement for full details of your enhanced service package.

Device Management

Phaser Installer, CentreWare® IS Embedded Web Server, CentreWare Web, PrintingScout™, Email alerts

Print Drivers

Windows® 2000/XP/Vista, Server 2003/2008, Xerox Global Print Driver, Xerox Mobile Express Driver, Mac OS® version 10.3 and above, Linux: SUSE™, Red Hat®, TurboLinux 10 Desktop

Font Capability

136 PostScript® fonts; 81 PCL® fonts

Media Handling

Multipurpose Tray, Tray 2, Tray 3 (optional): 65 – 220 gsm

Media types: Plain paper, glossy, envelopes, labels, transparencies, cardstock, postcards, Two sided printing: 65 – 163 gsm

Colour Standards

PANTONE® Colour approved solid-colour simulations, Colour Correction, ICC Profile, Colour Sync

Operating Environment

Temperature: Storage: -20° to 40° C

Operating: 10° to 32° C

Humidity: 5% to 85%

Sound pressure levels:

Printing: 51.4 dB(A)

Standby: 30.1 dB(A)

Sound power levels:

Printing: 6.33 B, Standby: 4 B

Warm-up time (from sleep mode): 30 seconds

Electrical

Power: 220–240 VAC, 50/60 Hz

Power consumption:

Standby: 70 W

Printing: 450 W

Power save: 4.3 W

6280DN: ENERGY STAR® qualified

Dimensions (WxDxH)

6280N: 400 x 490 x 473 mm

Weight: 24.5 kg

Package Dimensions (WxDxH):

560 x 650 x 600 mm

Weight: 29.7 kg

6280DN: 400 x 490 x 473 mm

Weight: 29.25 kg

Optional 550-sheet Tray 2: 364 x 400 x 86 mm

Certifications

FCC Part 15, Class B, Listed UL 60950-1/CSA 60950-1-03, CE Mark applicable to Directives 2006/95/EC and 2004/108/EC, Section 508 ADA

What comes in the box

- Phaser 6280 Printer
- Print Cartridge (2,200 (CMY) print capacity¹, (3,000 (K) print capacity¹)
- Software and Documentation CD (with User Manual, Quick Installation Guide, Registration Card, Warranty Statement)
- Power cord

Supplies Recycling Programme

Consumables for the Phaser 6280 are part of the Xerox Green World Alliance Supplies Recycling Programme. For more information, please visit the Green World Alliance website at www.xerox.com/gwa

Supplies

Standard-Capacity Print Cartridge¹:

Black: 3,000 std. pages 106R01391
Cyan: 2,200 std. pages 106R01388
Magenta: 2,200 std. pages 106R01389
Yellow: 2,200 std. pages 106R01390

High-Capacity Print Cartridge¹:

Black: 7,000 std. pages 106R01395
Cyan: 5,900 std. pages 106R01392
Magenta: 5,900 std. pages 106R01393
Yellow: 5,900 std. pages 106R01394

Options

550-sheet feeder 097S03744
550-sheet pedestal stand/feeder 097S03833
256 MB Memory 097S03743
512 MB Memory 097S03635
Duplex unit 097S03746

Productivity Kit (includes 40 GB hard drive) 097S03967
Wireless network adaptor
- European power converter 097S03741
- UK power converter 097S03742

¹ Average standard pages. Declared Yield in accordance with ISO/IEC 19798. Yield will vary based on image, area coverage and print mode.

